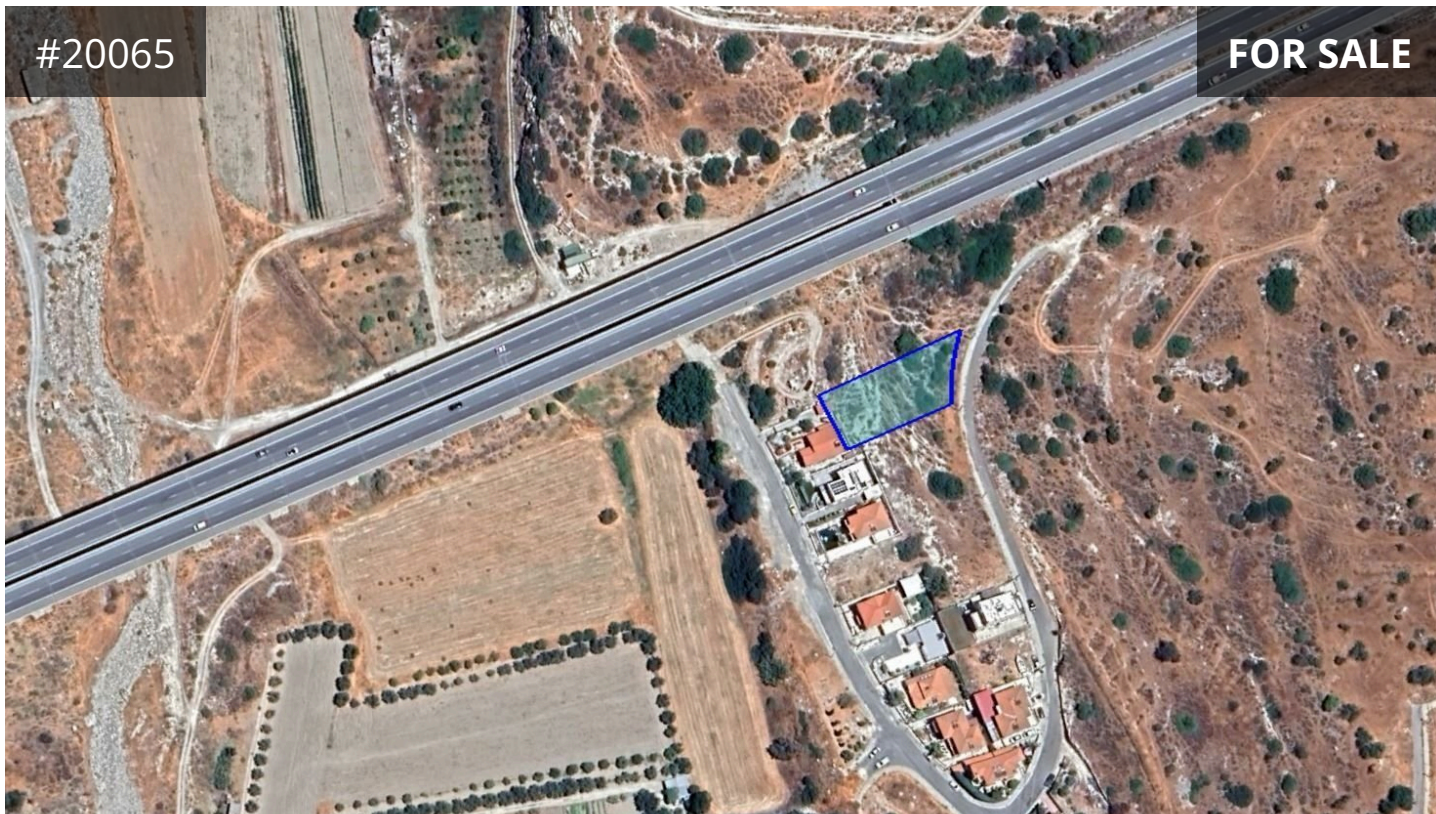


#20065

FOR SALE



Limassol, Erimi

887 m² Area

Description

Residential plot of 887 m² for sale in Erimi, Limassol. Closed to all necessary amenities schools, shops and supermarket. With easy access to main roads and highways located 30m from the Limassol-Paphos motorway.

- Planning Zone: Residential H3, Building Density 60%, Coverage Coefficient 35% with maximum 2 floors and 8.3m height.
- The plot has a rectangular shape and even surface.
- The plot abuts a public road with a road frontage of approx. 22m.

€90,000 +VAT €110,000

TYPE	Building Plot
PLOT	887 m²
TITLE DEED	Yes

reinvest.com.cy